

Dated 26 February 2018

**WINCHESTER CITY COUNCIL**

**Town and Country Planning Act 1990**

**TREE PRESERVATION ORDER  
No. 2214 of 2017**

**Land at Church Copse, Greenwood Lane, Durley, Hampshire, SO32 2AP**

This Order was confirmed by Winchester City Council without further modification on the 26<sup>th</sup>  
day of February 2018.

The Common Seal of the Council )  
of the City of Winchester was )  
hereunto affixed this 26<sup>th</sup> day of )  
February 2018 in the presence of )

*[Handwritten Signature]*  
Planning Information  
Sohal



Dated 05 September 2017

**WINCHESTER CITY COUNCIL**

**Town and Country Planning Act 1990**

**TREE PRESERVATION ORDER**

**No 2214 of 2017**

**Land at Church Copse, Greenwood Lane, Durley, Hampshire, SO32 2AP**

Howard Bone LLB (Hons)  
Head of Legal Services  
City Offices  
Colebrook Street  
Winchester  
Hampshire  
SO23 9LJ

Ref: TVTPO2214

**TOWN AND COUNTRY PLANNING (TREE PRESERVATION)(ENGLAND)  
REGULATIONS 2012**

**TREE PRESERVATION ORDER**

**Town and Country Planning Act 1990  
Winchester City Council Tree Preservation Order No 2214 of 2017**

Winchester City Council, in exercise of the powers conferred on them by section 198 of the Town and Country Planning Act 1990 hereby make the following Order—

**Citation**

1. This Order may be cited as Winchester City Council Tree Preservation Order No. 2214 of 2017.

**Interpretation**

2. In this Order "the authority" means Winchester City Council and unless the context otherwise requires, any reference in this Order to a numbered section is a reference to the section so numbered in the Town and Country Planning Act 1990 and any reference to a numbered regulation is a reference to the regulation so numbered in the Town and Country Planning (Tree Preservation) (England) Regulations 2012.

**Effect**

3. (1) Subject to article 4, this Order takes effect provisionally on the date on which it is made.

(2) Without prejudice to subsection (7) of section 198 (power to make tree preservation orders) or subsection (1) of section 200 (tree preservation orders: Forestry Commissioners) and, subject to the exceptions in regulation 14, no person shall -

- (a) cut down, top, lop, uproot, wilfully damage or wilfully destroy; or
- (b) cause or permit the cutting down, topping, lopping, uprooting, wilful damage or wilful destruction of any tree specified in the Schedule to this Order except with the written consent of the authority, in accordance with regulations 16 and 17, or of the Secretary of State in accordance with regulation 23, and, where such consent is given subject to conditions, in accordance with those conditions.

**Application to trees to be planted pursuant to a condition**

4. In relation to any tree identified in the first column of the Schedule by the letter 'C' being a tree to be planted pursuant to a condition imposed under paragraph (a) of section 197 (planning permission to include appropriate provision for preservation and planting of trees), this Order takes effect as from the time when the tree is planted.

## SCHEDULE 1

### SPECIFICATION OF TREES

Trees specified individually  
(encircled in black on maps)

Note: DBH refers to "diameter at breast height" a standard method of measuring the trunk of a tree at 1.3 metres above the ground.

Reference on map	Description	Situation
2214T01	BEECH	Land at Church Copse, Greenwood Lane, Durley, Hampshire, SO32 2AP
2214T02	MULTI STEM BEECH	
2214T03	MATURE OAK	
2214T04	MATURE BEECH	
2214T05	SEMI MATURE BEECH DBH GREATER THAN 160MM ON 30/08/2017	
2214T06	MATURE OAK	
2214T07	SEMI MATURE BEECH DBH GREATER THAN 160MM ON 30/08/2017	
2214T08	MULTI STEM BEECH	
2214T09	MULTI STEM BEECH	
2214T10	SEMI MATURE BEECH DBH GREATER THAN 134MM ON 30/08/2017	
2214T11	MATURE OAK	
2214T12	BEECH	
2214T13	MULTI STEM BEECH	
2214T14	BEECH	
2214T15	MULTI STEM BEECH	
2214T16	BEECH	
2214T17	OAK	
2214T18	BEECH	
2214T19	BEECH	
2214T20	BEECH	
2214T21	BEECH	
2214T22	BEECH	
2214T23	SEMI MATURE BEECH DBH GREATER THAN 110MM ON 30/08/2017	
2214T24	BEECH	
2214T25	BEECH	
2214T26	BEECH	
2214T27	BEECH	
2214T28	BEECH	
2214T29	YOUNG BEECH DBH GREATER THAN 110MM ON 30/08/2017	

2214T30	MULTI STEM BEECH
2214T31	MATURE OAK WITH ROAD SIGN ATTACHED
2214T32	MULTI STEM BEECH
2214T33	BEECH
2214T34	BEECH
2214T35	BEECH
2214T36	BEECH
2214T37	BEECH
2214T38	BEECH
2214T39	BEECH
2214T40	BEECH
2214T41	OAK
2214T42	BEECH
2214T43	MULTI STEM BEECH
2214T44	BEECH
2214T45	BEECH
2214T46	BEECH
2214T47	MULTI STEM BEECH
2214T48	MATURE OAK
2214T49	BEECH
2214T50	MULTI STEM BEECH
2214T51	BEECH
2214T52	MULTI STEM BEECH
2214T53	MULTI STEM BEECH
2214T54	YOUNG BEECH DBH GREATER THAN 116MM ON 30/08/2017
2214T55	YOUNG BEECH DBH GREATER THAN 125MM ON 30/08/2017
2214T56	YOUNG BEECH DBH GREATER THAN 116MM ON 30/08/2017
2214T57	MATURE OAK
2214T58	MULTI STEM BEECH
2214T59	BEECH
2214T60	MATURE SYCAMORE
2214T61	OAK
2214T62	OAK
2214T63	MATURE OAK
2214T64	BEECH
2214T65	BEECH

2214T66	BEECH
2214T67	BEECH
2214T68	BEECH
2214T69	OAK
2214T70	MULTI STEM BEECH
2214T71	BEECH
2214T72	BEECH
2214T73	BEECH
2214T74	OAK
2214T75	OAK
2214T76	MULTI STEM BEECH
2214T77	OAK
2214T78	OAK
2214T79	BEECH
2214T80	SWEET CHESTNUT
2214T81	BEECH
2214T82	MULTI STEM BEECH
2214T83	SWEET CHESTNUT
2214T84	YOUNG BEECH DBH GREATER THAN 110MM ON 30/08/2017
2214T85	SEMI MATURE OAK
2214T86	BEECH

Trees specified by reference to an area  
(within a dotted black line on the map)

Reference on map	Description	Situation
None		

Groups of trees  
(within a broken black line on the map)

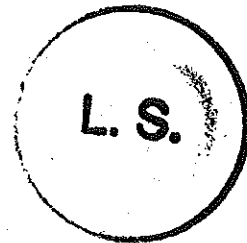
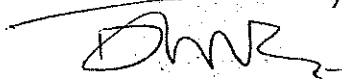
Reference on map	Description	Situation
2214G1	BEECH WITH DBH GREATER THAN 40MM ON 30/08/2017	Land at Church Copse, Greenwood Lane, Durley, Hampshire, SO32 2AP
2214G2	BEECH WITH DBH GREATER THAN 40MM ON 30/08/2017	Land at Church Copse, Greenwood Lane, Durley, Hampshire, SO32 2AP

**Woodlands**  
(within a continuous black line on the map)

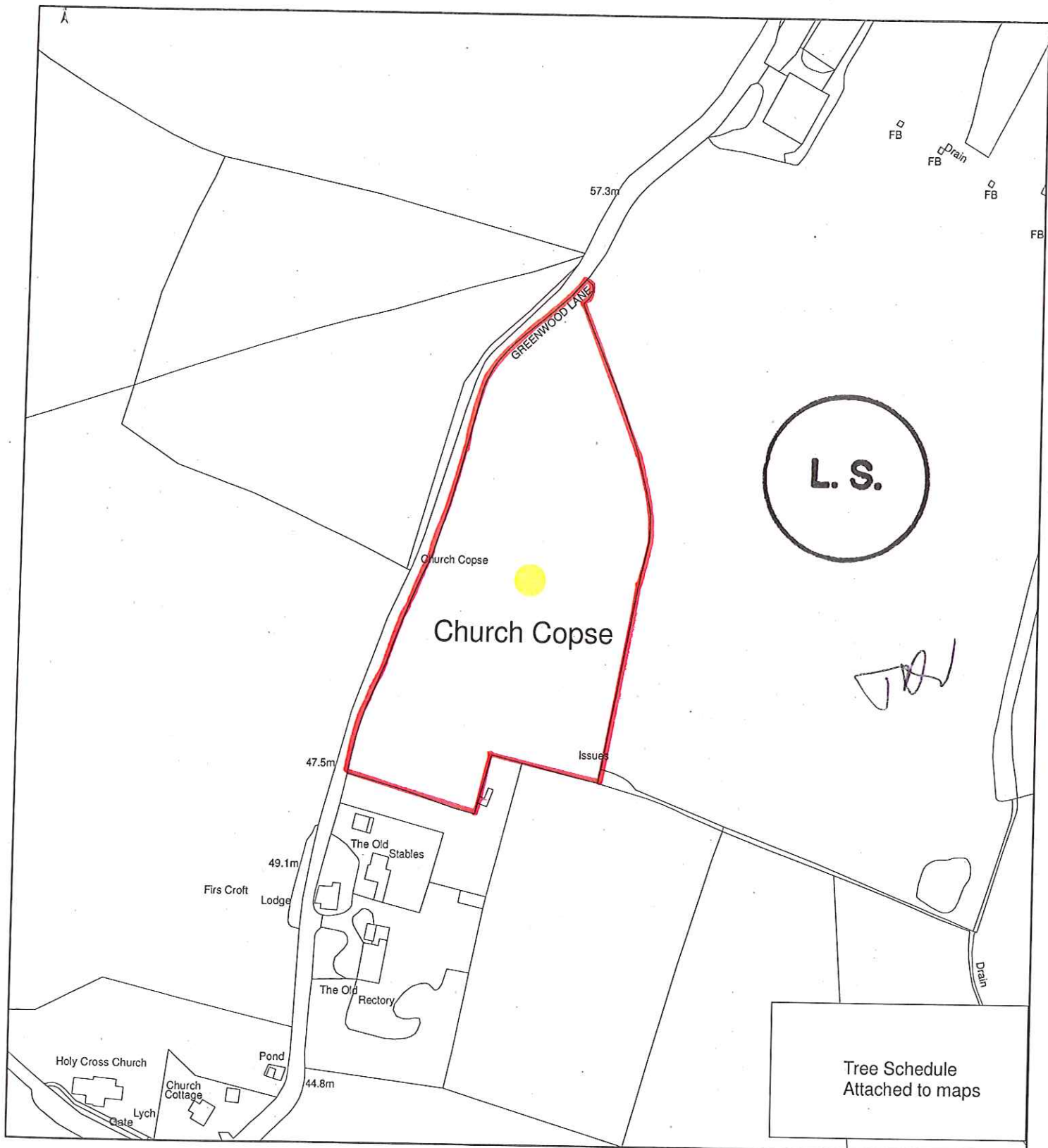
Reference on map	Description	Situation
None		

**Note: Maps 1 – 6 run north to south along the eastern side of Greenwood Lane**

The Common Seal of Winchester City Council  
was hereunto affixed this Tuesday, 05 September 2017  
in the presence of



NO. IN SEAL REGISTER:
10140



A1 Area

G1 Group

W1 Woodland

T1 Tree

**TOWN AND COUNTRY PLANNING ACT 1990**  
Section 198 - 201

Tree Preservation Order No. 2213

Location:  
Site location plan  
for Church Copse

OS Grid: 4629

Scale: 2: 500@ A4

Date : 30/8/17

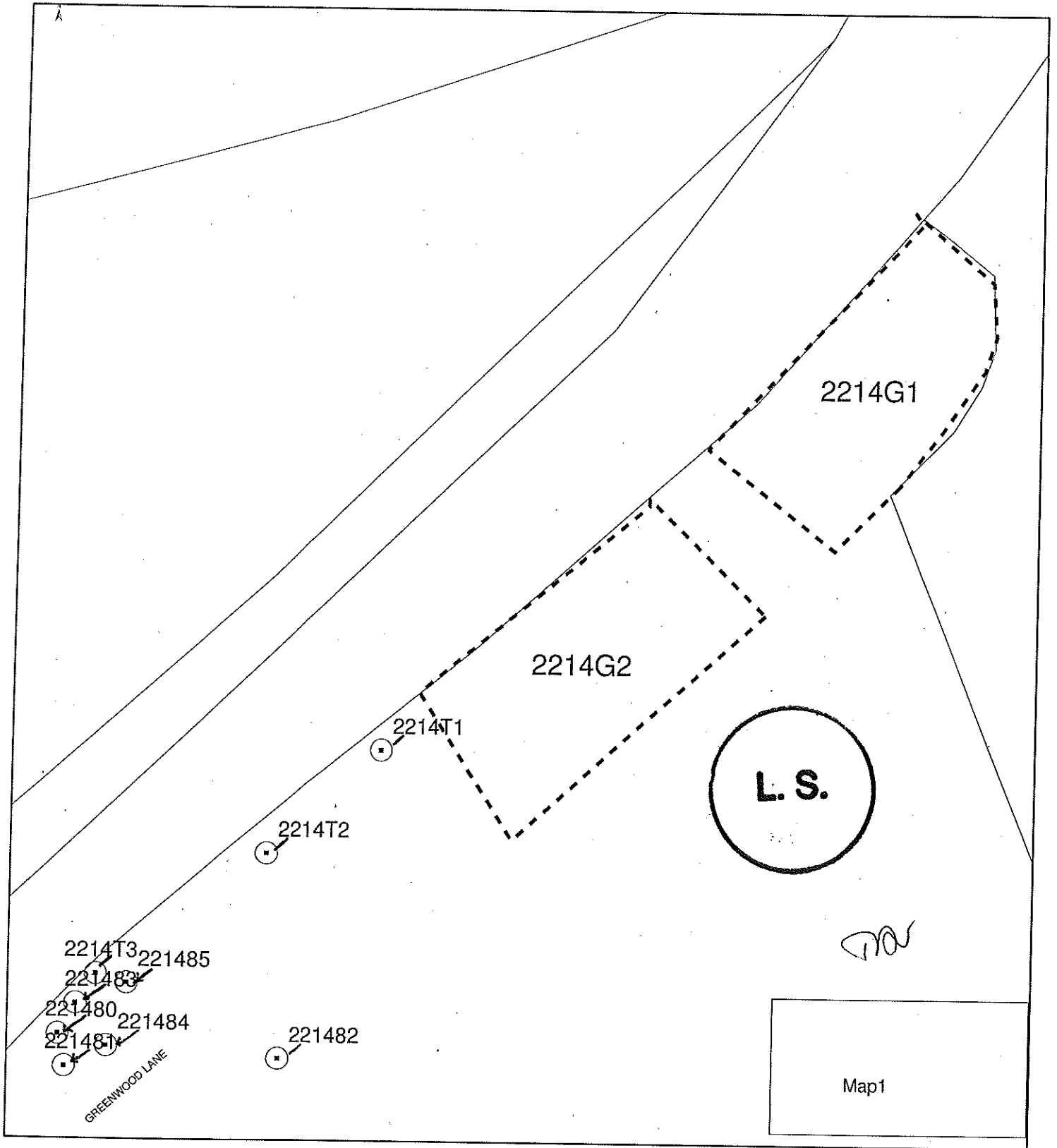


**Winchester**  
City Council

Director of Operations  
Winchester City Council  
POBox 497, City Offices  
Colebrook Street  
Winchester  
Hampshire  
SO23 9DD

Telephone 01962 840 222  
Fax 01962 841 365





- A1 Area
- G1 Group
- W1 Woodland
- T1 Tree

**TOWN AND COUNTRY PLANNING ACT 1990**  
Section 198 - 201

Tree Preservation Order No. 2214

Location: Land at Church Copse  
Greenwood Lane  
Durley

Scale: 1:220 @ A4

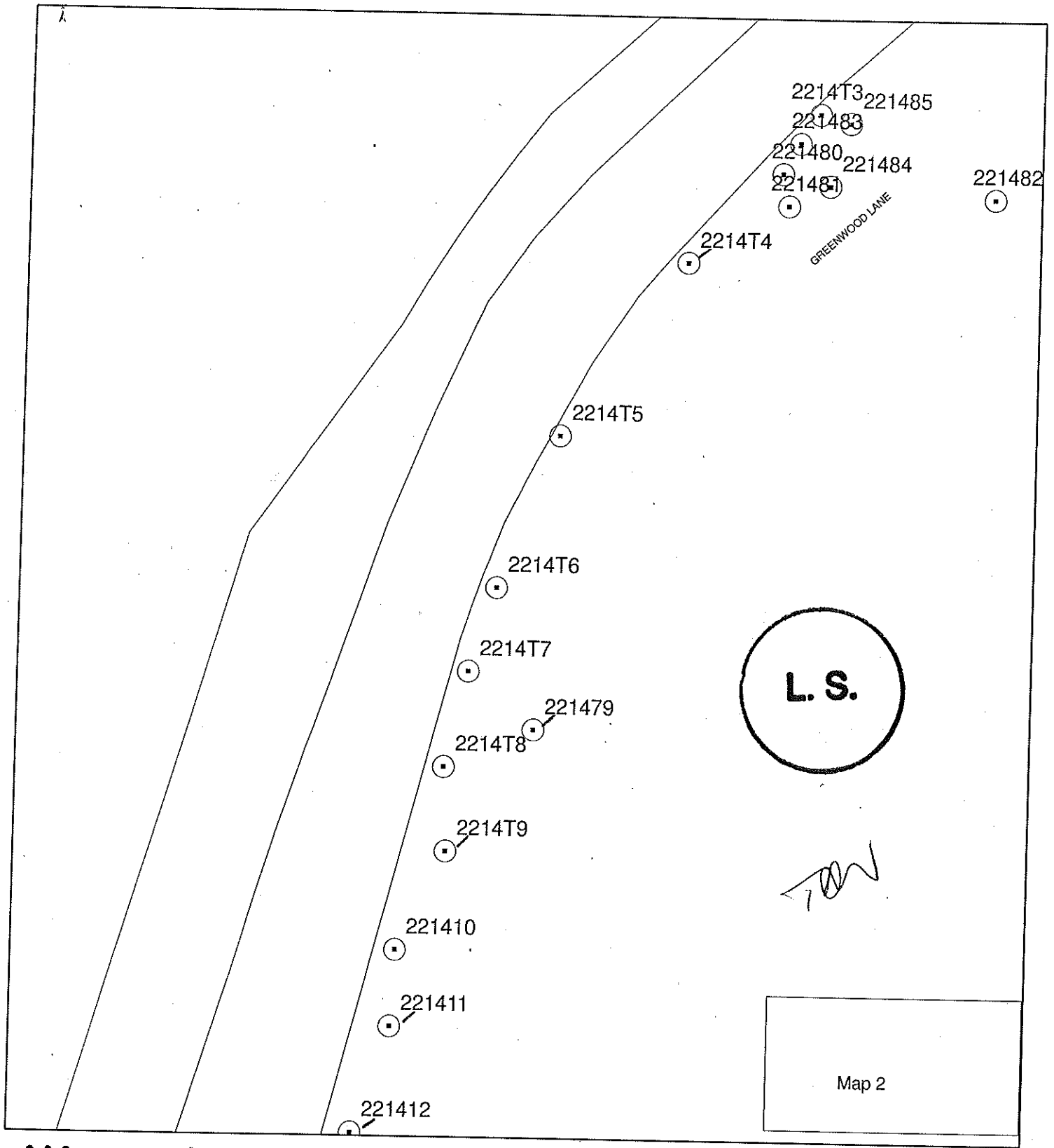
Date : 30/8/17



**Winchester**  
City Council

Director of Operations  
Winchester City Council  
POBox 497, City Offices  
Colebrook Street  
Winchester  
Hampshire  
SO23 9DD

Telephone 01962 840 222  
Fax 01962 841 365



- A1 Area
- G1 Group
- W1 Woodland
- T1 Tree

**TOWN AND COUNTRY PLANNING ACT 1990**  
Section 198 - 201

Tree Preservation Order No. 2214

Location: Land at Church Copse  
Greenwood Lane  
Durley

Scale: 1:220 @ A4

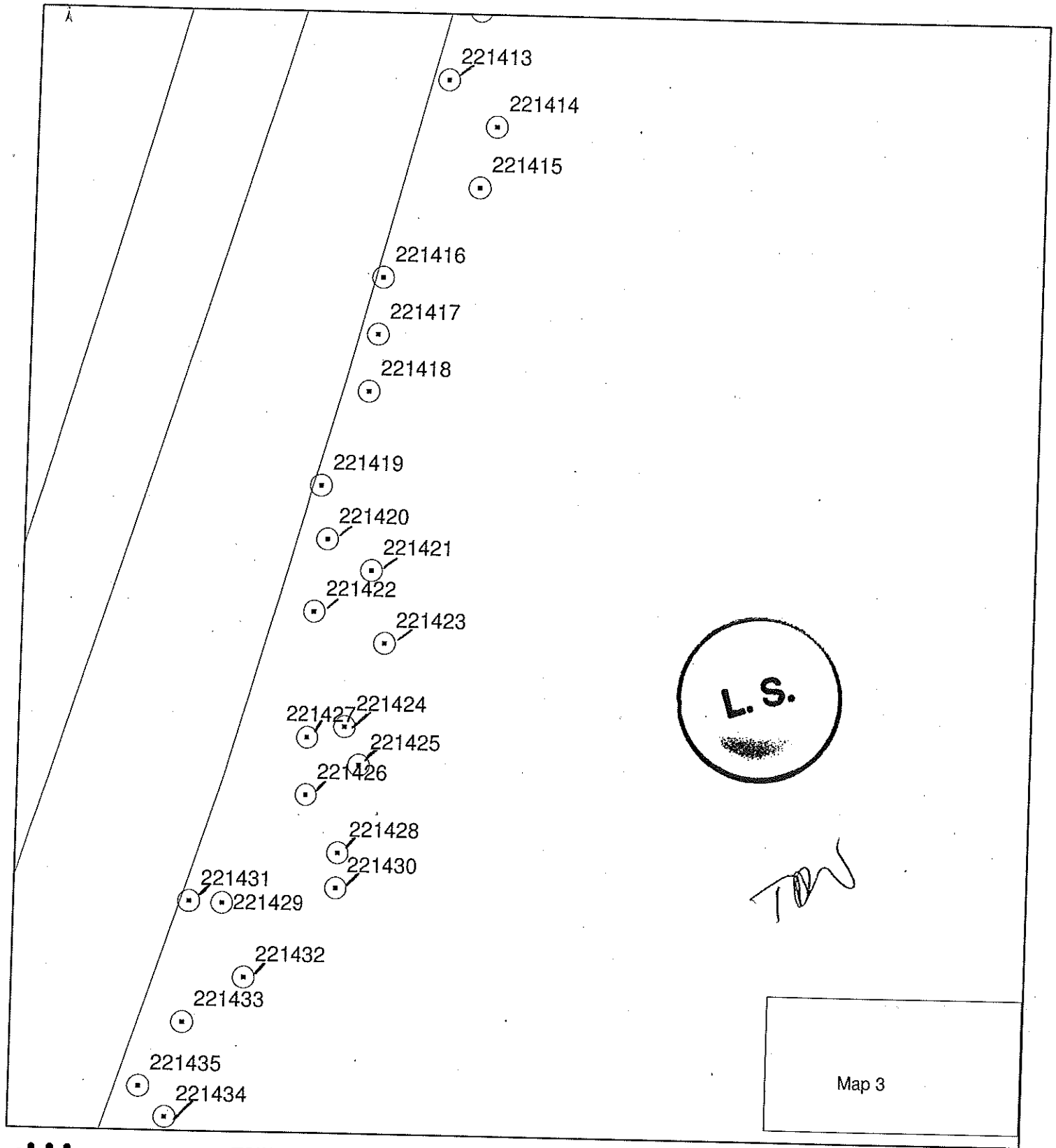
Date : 30/8/17



**Winchester**  
City Council

Director of Operations  
Winchester City Council  
POBox 497, City Offices  
Colebrook Street  
Winchester  
Hampshire  
SO23 9DD

Telephone 01962 840 222  
Fax 01962 841 365



A1 Area

G1 Group

W1 Woodland

T1 Tree

TOWN AND COUNTRY PLANNING ACT 1990  
Section 198 - 201

Tree Preservation Order No. 2214

Location: Land at Church Copse  
Greenwood Lane  
Durley

Scale: 1:220 @ A4

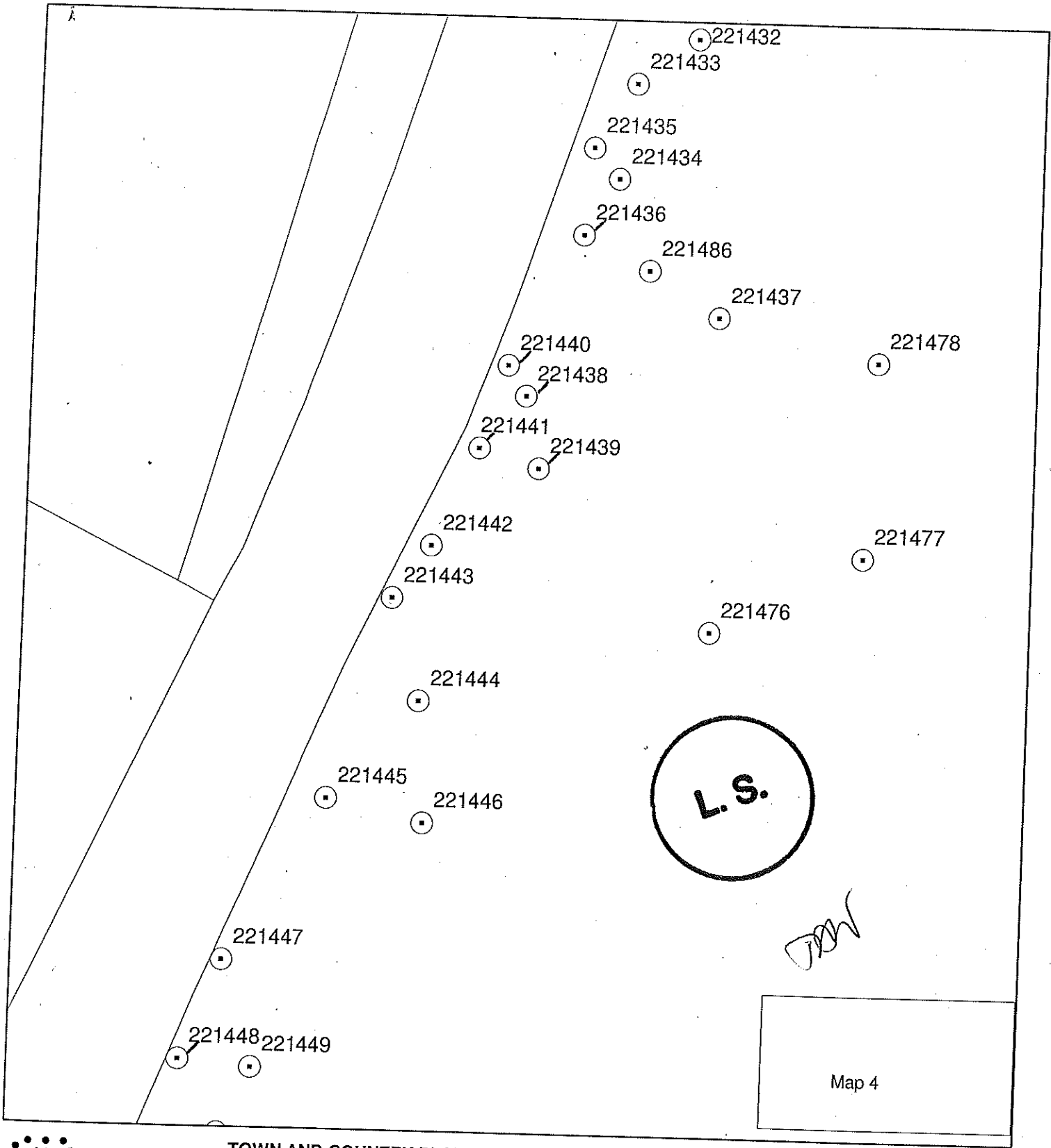
Date : 30/8/17



**Winchester**  
City Council

Director of Operations  
Winchester City Council  
POBox 497, City Offices  
Colebrook Street  
Winchester  
Hampshire  
SO23 9DD

Telephone 01962 840 222  
Fax 01962 841 365



- A1 Area
- G1 Group
- W1 Woodland
- T1 Tree

**TOWN AND COUNTRY PLANNING ACT 1990**  
Section 198 - 201

Tree Preservation Order No. 2214

Location: Land at Church Copse  
Greenwood Lane  
Durley

Scale: 1:220 @ A4

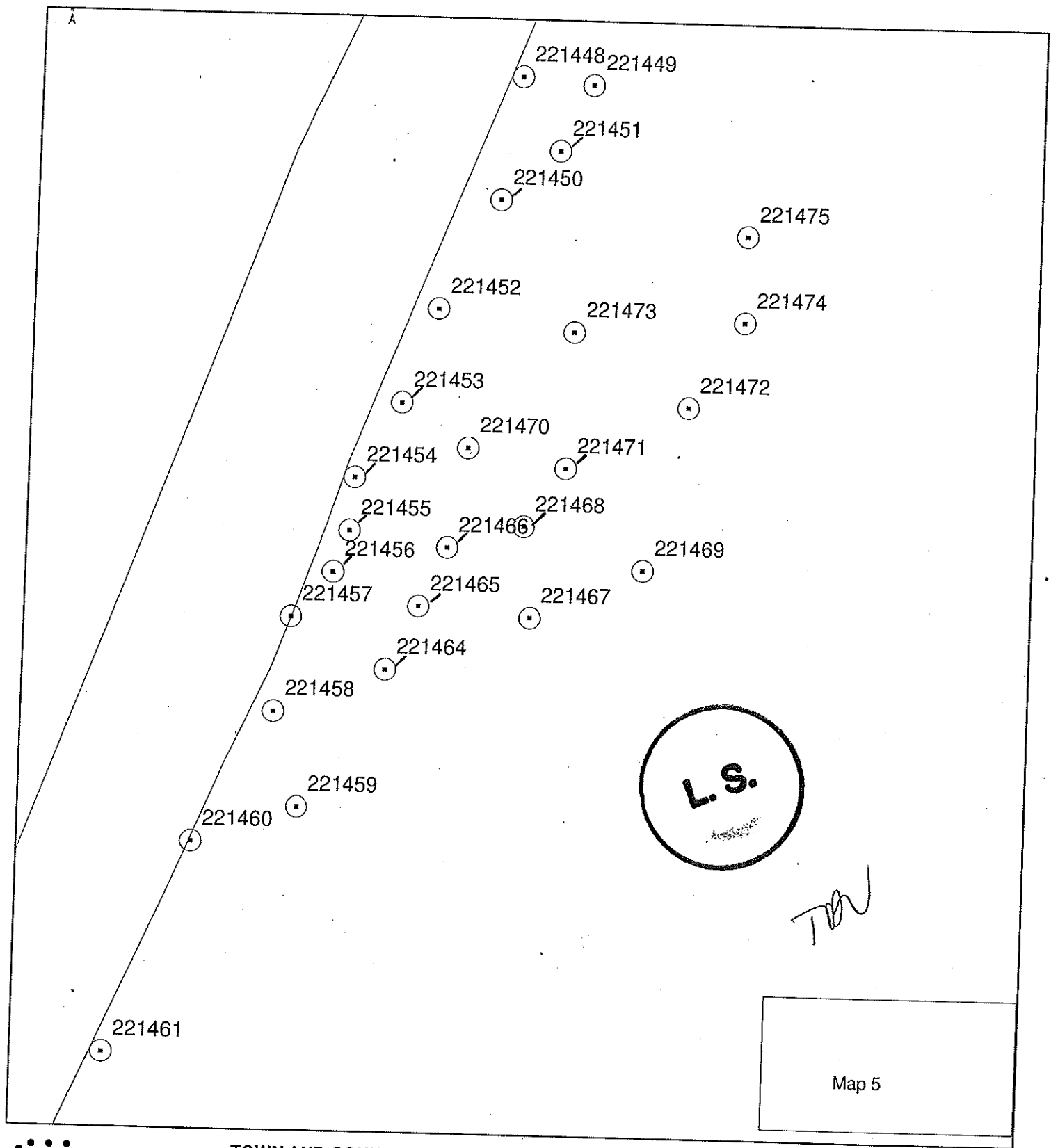
Date : 30/8/17



**Winchester**  
City Council

Director of Operations  
Winchester City Council  
POBox 497, City Offices  
Colebrook Street  
Winchester  
Hampshire  
SO23 9DD

Telephone 01962 840 222  
Fax 01962 841 365



A1 Area

G1 Group

W1 Woodland

T1 Tree

TOWN AND COUNTRY PLANNING ACT 1990  
Section 198 - 201

Tree Preservation Order No. 2214

Location: Land at Church Copse  
Greenwood Lane  
Durley

Scale: 1:220 @ A4

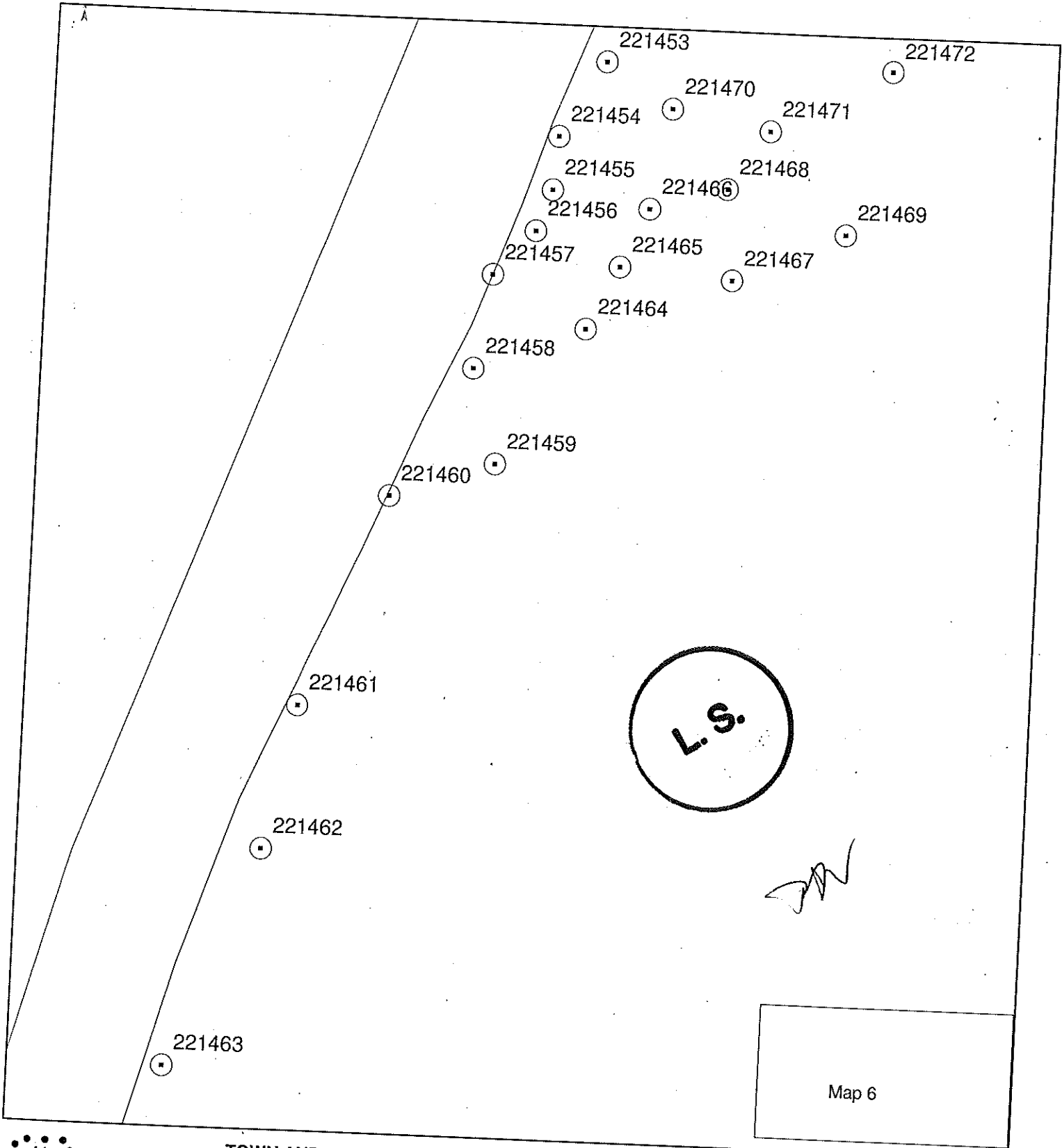
Date : 30/8/17



**Winchester**  
City Council

Director of Operations  
Winchester City Council  
POBox 497, City Offices  
Colebrook Street  
Winchester  
Hampshire  
SO23 9DD

Telephone 01962 840 222  
Fax 01962 841 365



- A1 Area
- G1 Group
- W1 Woodland
- T1 Tree

TOWN AND COUNTRY PLANNING ACT 1990  
Section 198 - 201

Tree Preservation Order No. 2214

Location: Land at Church Copse  
Greenwood Lane  
Durley

Scale: 1:220 @ A4

Date : 30/8/17



**Winchester**  
City Council

Director of Operations  
Winchester City Council  
POBox 497, City Offices  
Colebrook Street  
Winchester  
Hampshire  
SO23 9DD

Telephone 01962 840 222  
Fax 01962 841 365