

**These are the notes referred to on the following official copy**

The electronic official copy of the title plan follows this message.

Please note that this is the only official copy we will issue. We will not issue a paper official copy.

This official copy was delivered electronically and when printed will not be to scale. You can obtain a paper official copy by ordering one from HM Land Registry.

This official copy is issued on 24 April 2024 shows the state of this title plan on 24 April 2024 at 17:18:53. It is admissible in evidence to the same extent as the original (s.67 Land Registration Act 2002). This title plan shows the general position, not the exact line, of the boundaries. It may be subject to distortions in scale. Measurements scaled from this plan may not match measurements between the same points on the ground. This title is dealt with by the HM Land Registry, Weymouth Office .

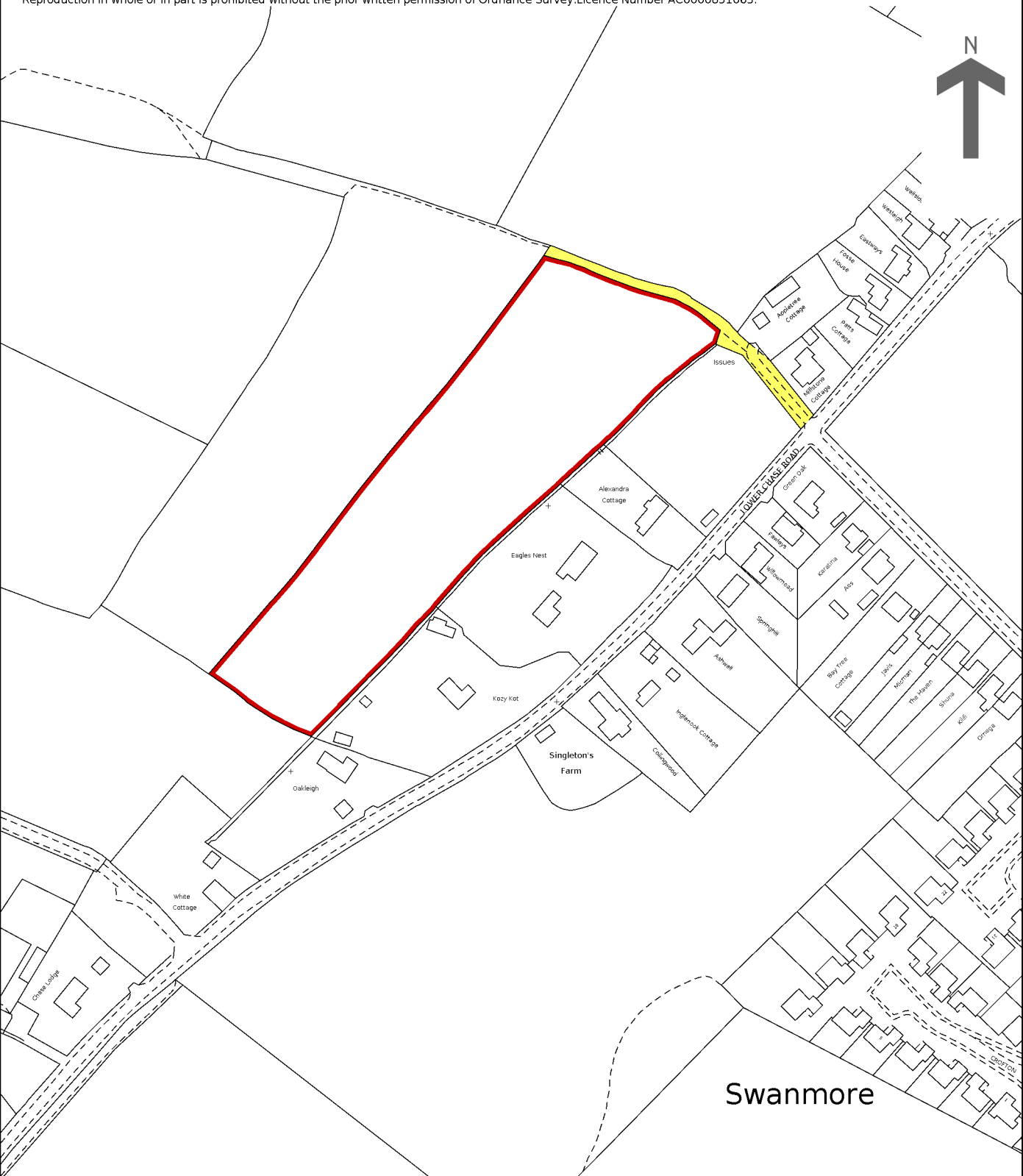
# HM Land Registry

## Official copy of title plan

Title number **HP594652**  
Ordnance Survey map reference **SU5716SW**  
Scale **1:2500**  
Administrative area **Hampshire : Winchester**



©Crown Copyright. Produced by HM Land Registry.  
Reproduction in whole or in part is prohibited without the prior written permission of Ordnance Survey. Licence Number AC0000851063.



Swanmore